

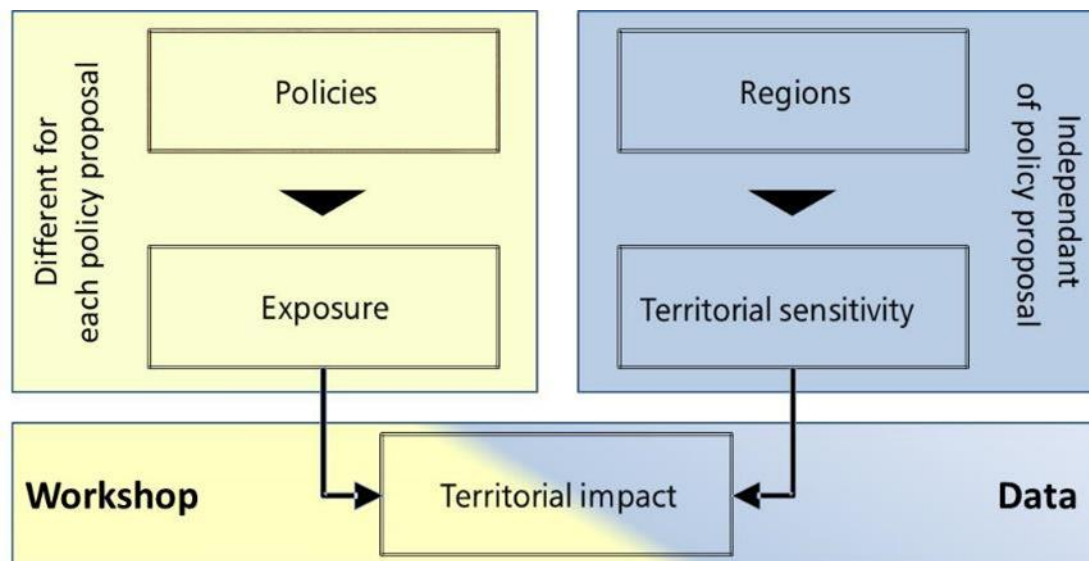


European Committee
of the Regions

Report on the Bioeconomy Territorial Impact Assessment

26 June 2019

Goal and Methodology



Preliminary Discussion



Report on the Bioeconomy Territorial Impact Assessment

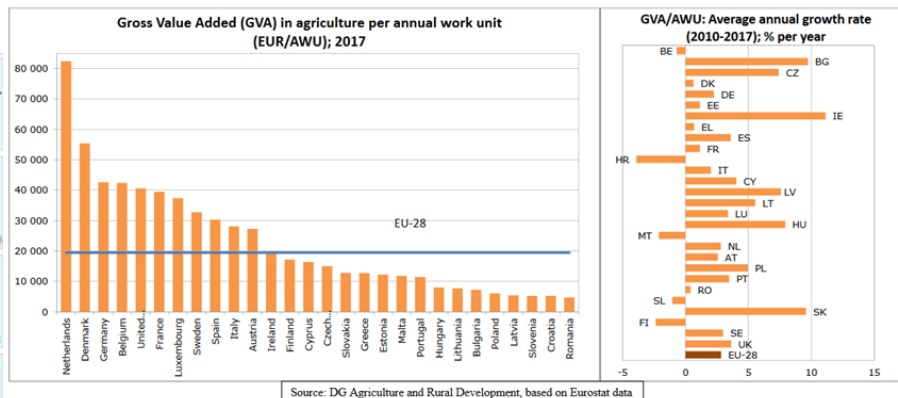
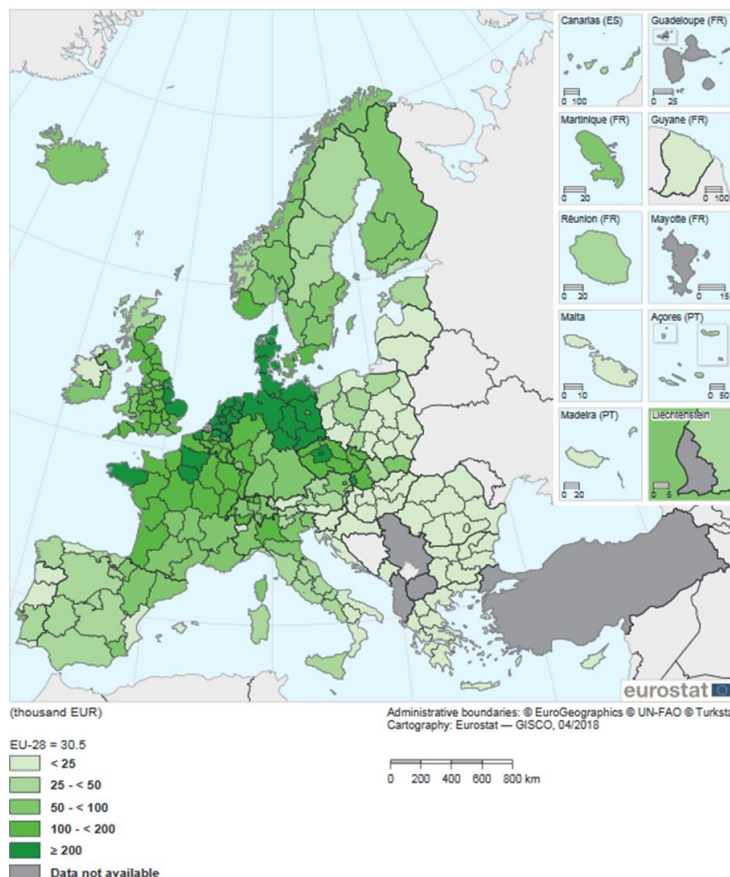
Workshop 1 April 2019



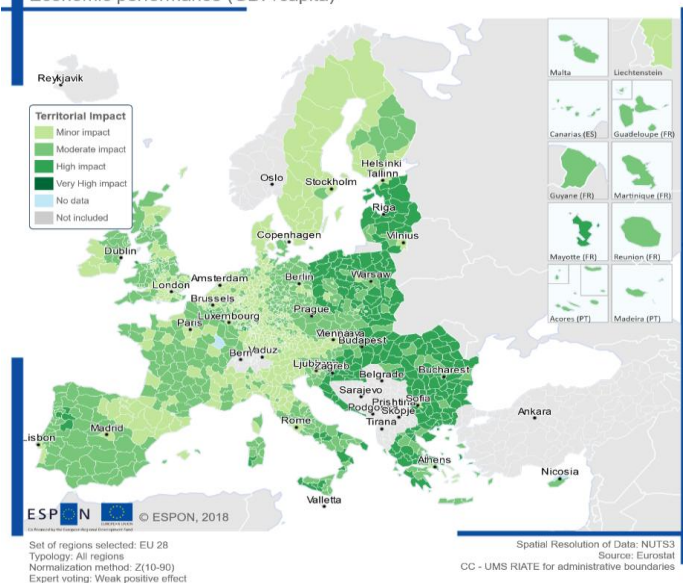
European Committee
of the Regions

Possible Economic Effects

Average economic size of farm holdings, by NUTS 2 regions, 2013
(thousand EUR)



Economic performance (GDP/capita)



Note: Germany and London (UK): NUTS level 1. Slovenia: national data. Iceland, Switzerland and Montenegro: 2010.
Source: Eurostat (online data code: ef_kvesleg)

Report on the Bioeconomy Territorial Impact Assessment

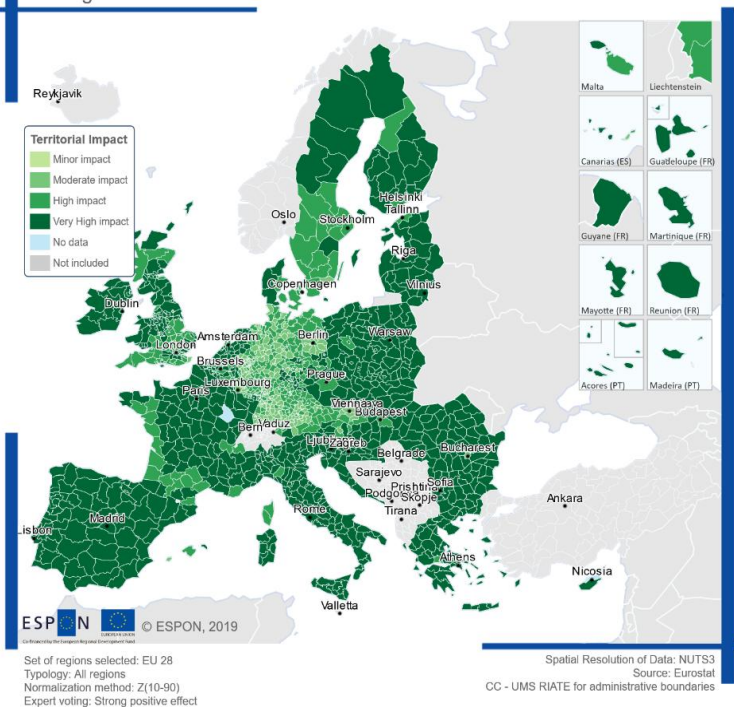
Workshop 1 April 2019



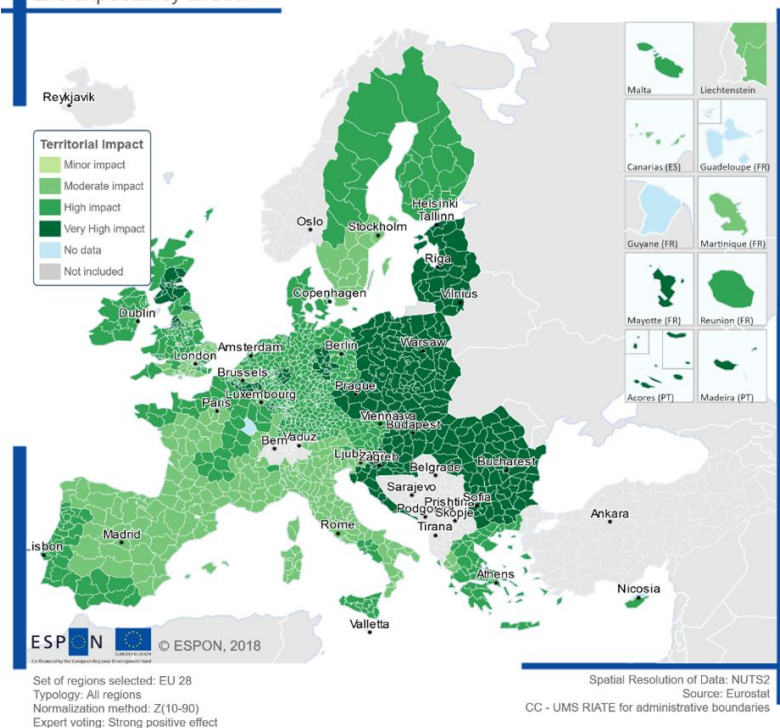
European Committee
of the Regions

Possible Social Effects

Net migration

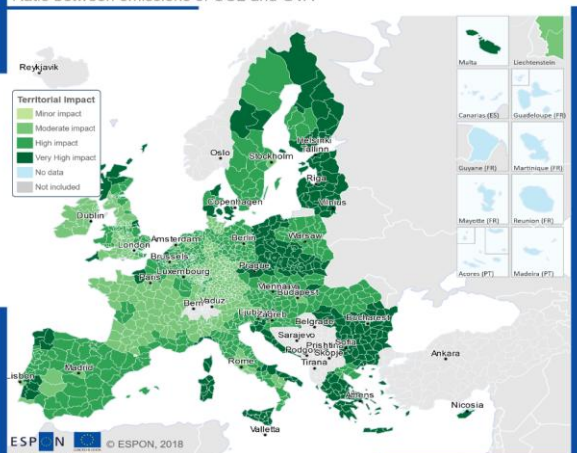


Life expectancy at birth



Possible Environmental Effects

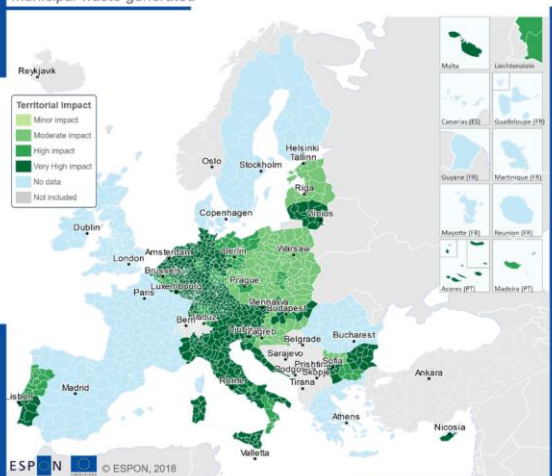
Ratio between emissions of CO2 and GVA



Set of regions selected: EU 28
 Typology: All regions
 Normalization method: Z(10-90)
 Expert voting: Strong positive effect

Spatial Resolution of Data: NUTS2
 Source: JRC, GAINS model, Eurostat, OIR calculation
 CC - UMS RIATE for administrative boundaries

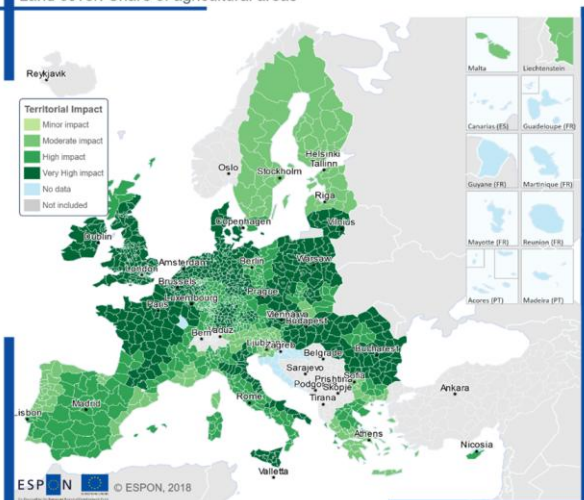
Municipal waste generated



Set of regions selected: EU 28
 Typology: All regions
 Normalization method: Z(10-90)
 Expert voting: Strong positive effect

Spatial Resolution of Data: NUTS2
 Source: Eurostat - pilot project data - emz_mw_gen
 CC - UMS RIATE for administrative boundaries

Land cover: Share of agricultural areas



Set of regions selected: EU 28
 Typology: All regions
 Normalization method: Z(10-90)
 Expert voting: Strong positive effect

Spatial Resolution of Data: NUTS2
 Source: Eurostat, LUCAS Land Use and Cover Area frame Survey
 CC - UMS RIATE for administrative boundaries

Conclusions & Recommendations

Define **priorities among the conflicting goals** of sectors that create the bioeconomy

Link economic players from **different European regions** where they can achieve a **symbiotic relationship**

Generate **value-added at local level**

Consider the role of **public procurement**

Bioeconomy in the context of **Smart Specialisation Strategies**;
possible use of H2020 or ERDF resources



<https://cor.europa.eu/en/events/Documents/COTER/20190401TIACoRBioeconomy.pdf>

Thank you!

territorial.impact@cor.europa.eu
igor.caldeira@cor.europa.eu